

ŞEDARABAN ŞARKI

Sengin Senâi

Len'i Atlı

Â mâ de i ken bâ de i le

dop do lu bir..... cân

Ber rak se si ni ney ye ri ne

ıç..... dın o ak..... şan

ber rak se si ni ney ye ri ne

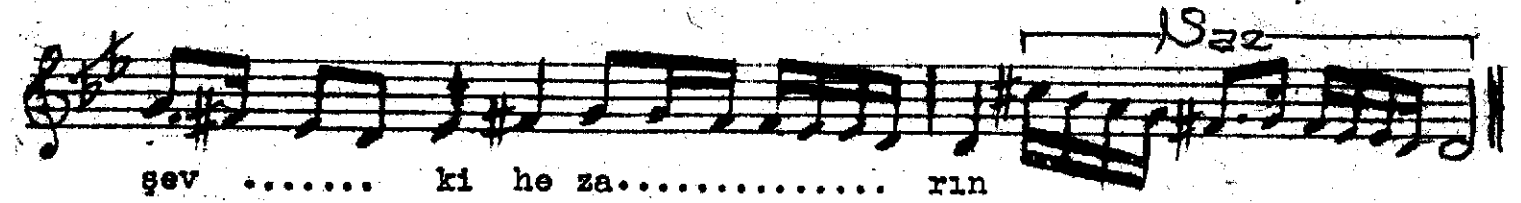
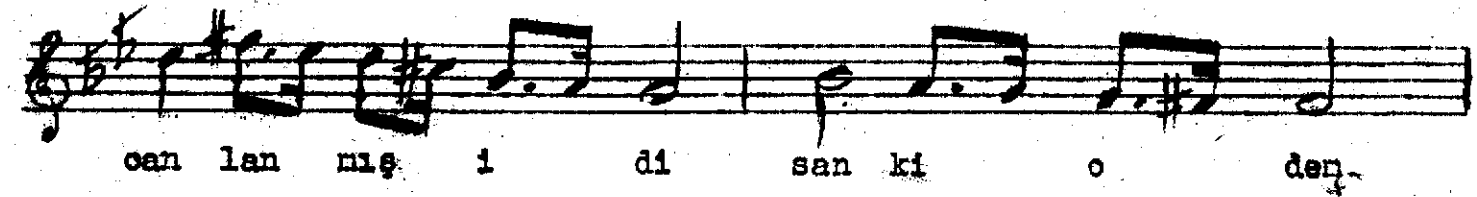
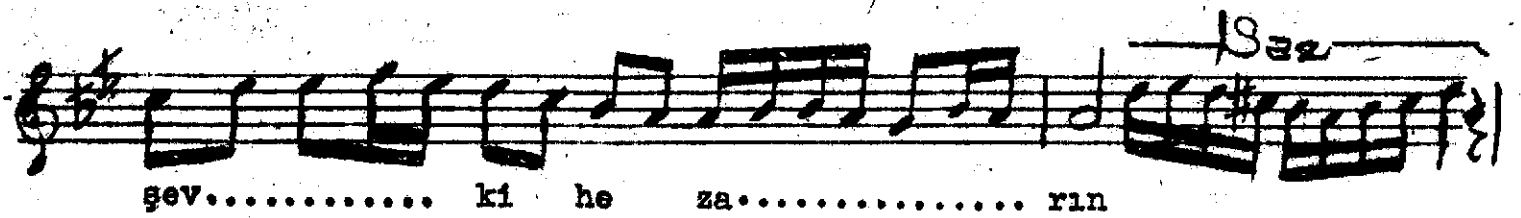
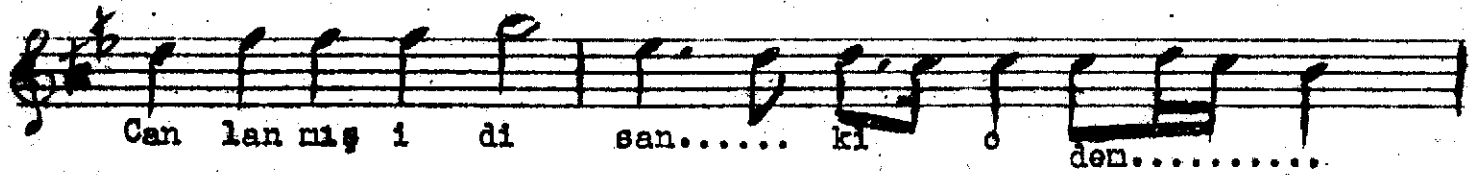
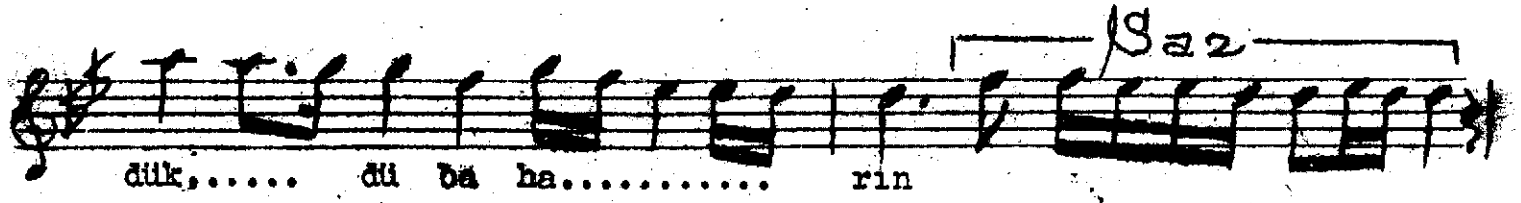
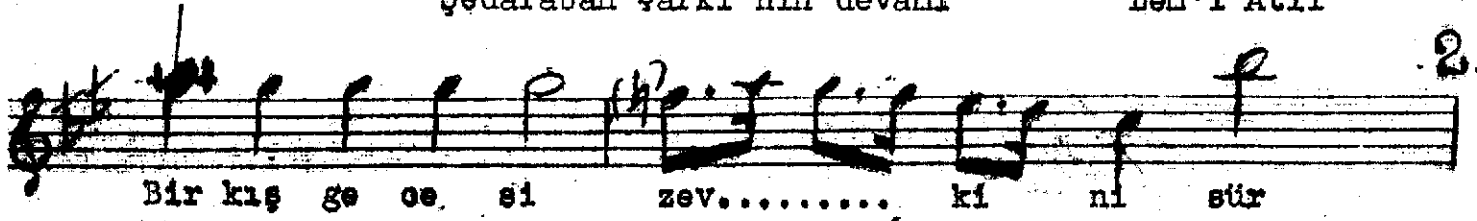
ıç..... dın o ak..... şan

ıç dik çe ha ya len a la rak

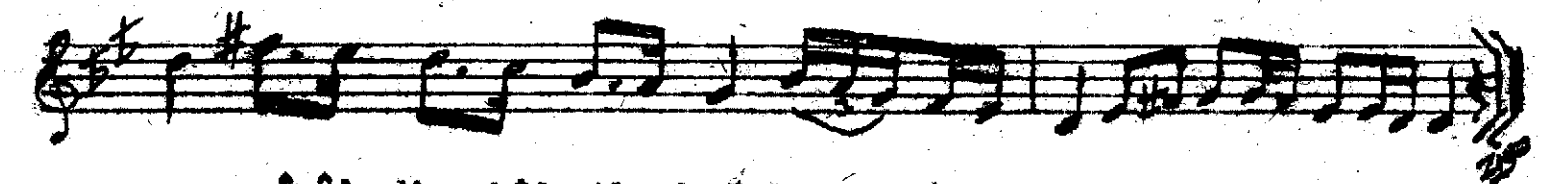
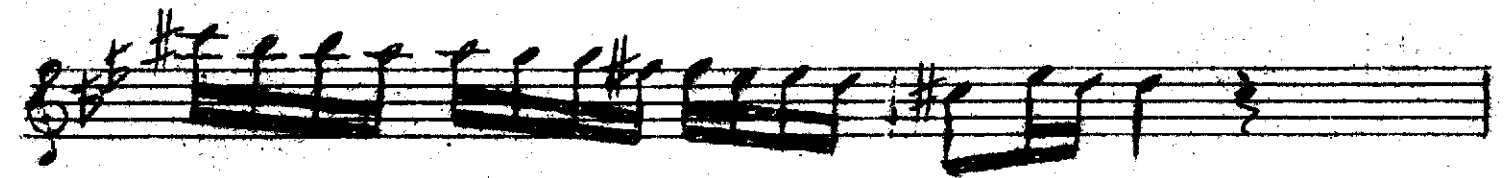
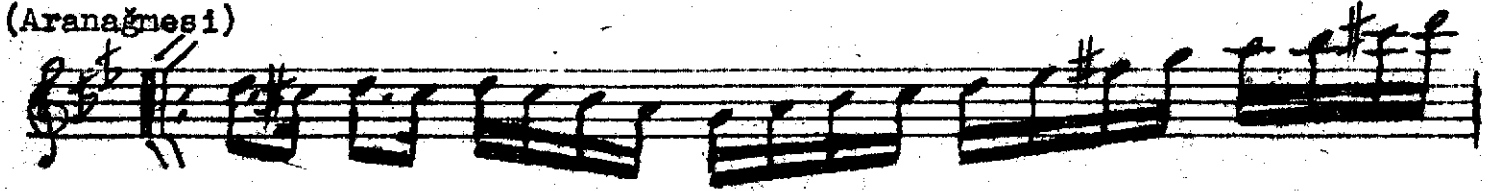
bâ se i gül..... fân

ıç dik çe ha ya len... a la rak

bâ se i gül..... fân



(Aranağmesi)



Amâde iken bâde ile dopdolu bir cân,
 Berrek sesini mey yerine içdin o akşam
 İçdikçe hayalen alarak buse-i gül fân
 Bir kiş gecesi zevkini sürdükü baharın
 Canlanmış idi sanki o den şevki, hezarın .

(T.Korman'dan)